


RESEARCH

Open Access



HIV-1 Rev interacts with HERV-K RcREs present in the human genome and promotes export of unspliced HERV-K proviral RNA

Laurie R. Gray¹, Rachel E. Jackson¹, Patrick E. H. Jackson^{1,2}, Stefan Bekiranov³, David Rekosh¹ and Marie-Louise Hammar skjöld^{1*} 

Abstract

Background: The HERV-K (HML-2) viruses are the youngest of the human endogenous retroviruses. They are present as several almost complete proviral copies and numerous fragments in the human genome. Many HERV-K proviruses express a regulatory protein Rec, which binds to an element present in HERV-K mRNAs called the RcRE. This interaction is necessary for the nucleo-cytoplasmic export and expression of HERV-K mRNAs that retain introns and plays a role analogous to that of Rev and the RRE in HIV replication. There are over 900 HERV-K RcREs distributed throughout the human genome. Thus, it was of interest to determine if Rev could functionally interact with selected RcRE elements that map either to HERV-K proviruses or human gene regions. This interaction would have the potential to alter the expression of both HERV-K mRNAs and cellular mRNAs during HIV-1 infection.

Results: In this study we employed a combination of RNAseq, bioinformatics and cell-based functional assays. Potential RcREs were identified through a number of bioinformatic approaches. They were then tested for their ability to promote export and translation of a reporter mRNA with a retained intron in conjunction with Rev or Rec. Some of the selected elements functioned well with either Rev, Rec or both, whereas some showed little or no function. Rev function on individual RcREs varied and was also dependent on the Rev sequence. We also performed RNAseq on total and cytoplasmic RNA isolated from SupT1 cells expressing HIV Rev, with or without Tat, or HERV-K Rec. Proviral mRNA from three HERV-K loci (4p16.1b, 22q11.23 and most significantly 3q12.3) accumulated in the cytoplasm in the presence of Rev or Tat and Rev, but not Rec. Consistent with this, the 3' RcRE from 3q12.3 functioned well with HIV-Rev in our reporter assay. In contrast, this RcRE showed little or no function with Rec.

Conclusions: The HIV Rev protein can functionally interact with many RcREs present in the human genome, depending on the RcRE sequence, as well as the Rev sequence. This leads to export of some of the HERV-K proviral mRNAs and also has the potential to change the expression of non-viral genes.

Keywords: HIV-1, HERV-K, HIV RRE, HIV Rev, HERV-K RcRE, RNA export, Human endogenous retroviruses

Background

With the recent advances in DNA sequencing, it is now realized that human endogenous retroviruses

(HERVs) constitute about 8% of the human genome. This is a result of retroviral integration after infection of the germ line. More than 200,000 copies of HERVs have been identified, making up more than thirty distinct groups [1, 2]. The majority of these proviruses are silenced through chromatin modifications and the accumulation of multiple point mutations, deletions, or insertions in their open reading frames (ORFs) or regulatory elements [3–5]. Nevertheless, multiple

*Correspondence: mh7g@virginia.edu

¹ Myles H. Thaler Center for AIDS and Human Retrovirus Research and the Department of Microbiology, Immunology, Cancer Biology, University of Virginia, Charlottesville 22908, USA

Full list of author information is available at the end of the article



endogenous retroviral copies are still almost complete and many fragmented HERV sequences provide functional *cis*-acting signals, such as promoters, enhancers, alternative splice sites, and poly-A signals that can alter human gene expression [6–8].

The youngest HERV family, HERV-K(HML-2), hereafter referred to as HERV-K, is thought to have integrated into the germ line between 200,000 and 5 million years ago [9, 10]. HERV-K viruses are named for their utilization of a lysine tRNA to prime reverse transcription and the Human MMTV-Like (HML-2) designation refers to the fact that these viruses are similar to mouse mammary tumor virus (MMTV) [11]. The copies of these viruses in the human genome have accumulated the fewest number of mutations among the HERVs and several have retained ORFs [8, 11]. Two different types of HML-2 proviruses have been identified, based on their potential to produce different viral regulatory proteins. Type I HERV-K viruses encode a protein named Np9, while type II viruses encode the regulatory protein Rec. Type I viruses are the result of a 292 bp deletion in the genome that shifts the *rec* ORF into another reading frame in a second coding exon, making the sequence of Np9 almost completely different from Rec. The function of Np9 remains unknown, although some studies suggest that it may have oncogenic potential [11–13]. Rec functions to facilitate the export of incompletely spliced HERV-K mRNAs from the nucleus to the cytoplasm (see below).

To date, over 90 copies of intact or partially intact HERV-K proviruses have been identified. Although infectious HERV-K molecular clones have been created in the laboratory [14–16], none of the sequences found in the human genome appear to produce a replicating, full-length integration-competent virus, despite the fact that some have complete open reading frames and two long terminal repeats (LTRs) [14]. Furthermore, many of these viruses are polymorphic in the human population, and new copies are still being discovered, so it remains possible that some of them are still capable of active retrotransposition [17, 18]. In addition to the proviral copies, more than 900 solo HERV-K LTRs, which have arisen from recombination events, are also present [14]. Many of these solo LTRs are located within intergenic regions of the genome, but they are also found within protein coding human genes [19]. Since these LTRs contain sequences that can function as regulatory elements of transcription, they have the potential to influence cellular gene expression within a gene or up to 200 kb either upstream or downstream of a neighboring gene [20].

The LTR of the HERV-K provirus also contains a sequence element, called the RcRE, that is present near the 3' end of all of the HERV-K mRNAs. The interaction of this element with the HERV-K Rec protein forms

a complex, together with Crm-1 and Ran-GTP [21–23], that promotes nuclear export and expression of the viral mRNAs that retain introns [24]. Complex exogenous retroviruses, such as HIV [25, 26], HTLV [27, 28], JSRV [29] and MMTV [30] also utilize similar mechanisms. For example, the HIV viral Rev protein acts in conjunction with the Rev responsive element (RRE) [25, 26] to perform this task. Early studies, reported about 15 years ago, examining putative functional RcREs from unknown locations in the genome, showed that the HIV Rev protein could promote export and expression of mRNA with retained introns from reporter constructs containing these RcREs. It was also reported that although Rev functioned to some extent with RcREs, the prototype Rec proteins failed to function in conjunction with the HIV-1 RRE [23, 31]. As discussed above, since hundreds of HERV-K LTRs are widely distributed throughout the human genome, potentially functional RcREs are also present in many human RNA transcripts. This raises the distinct possibility that when Rev is expressed during HIV infection, mRNA isoforms with retained introns, which would normally be found only in the nucleus, could be transported to the cytoplasm to alter the transcriptome. They could potentially also be translated and alter the proteome.

Several recent studies have examined the effect of HIV infection on host cell gene expression. A recent RNAseq study reported that HIV infection in primary CD4 T-cells led to accumulation of RNAs with a significant amount of intron retention in ribosomal protein and other genes [32]. The sequence analysis also detected induction of novel RNAs from retrotransposons and endogenous retroviruses. This study did not provide an explanation for the observed increase in these mRNA species, although an effect of expression of Rev was discussed as a potential explanation.

Several reports have also demonstrated expression of HERV-K mRNAs and proteins from proviruses in HIV-1 infected patients [33], as well as in cultured cells infected with HIV [34]. HERV-K virus-like particles have also been detected in the plasma of HIV-1 infected individuals [35]. However, in a recent report, increased HERV-K virion production in HIV-1 infected individuals was not detected, although there was increased transcription from some HERV-K LTRs [36]. Other reports have suggested that HERV-K transcripts and proteins can be induced by the HIV-1 viral proteins Tat and Vif, as a result of activation of transcription from the HERV-K LTR [37, 38].

Based on these studies, we decided to investigate whether putative functional RcREs found within known human genes, as well as in a HERV-K provirus (HERV-K 3q12.3) that was shown to be active during HIV

infection, could functionally respond to HIV Rev and HERV-K Rec proteins. The sequences were chosen based on their degree of homology to the prototypical RcREs that had been tested to date. Since our previous studies showed that Rev/RRE pairs from different HIV primary isolates displayed striking differences in functional activity [39], we also analyzed if different Rev proteins functioned differentially on different RcREs and how well the Revs worked in comparison to the prototypical Rec. Here we report that the selected HERV-K RcREs functioned with varying efficiencies in response to different HIV-1 Rev proteins and that some in fact functioned better with some of the Rev proteins than with Rec. We also show that the 3'LTR of HERV-K 3q12.3 functioned very well with Rev, while the 5' LTR did not and that the prototypical Rec protein showed almost no function on either element. Furthermore, expression of NL4-3 Rev, but not Rec, in SupT1 cells resulted in a significant increase in cytoplasmic, unspliced mRNA from this HERV-K provirus, and to a lesser extent, in at least two other ones.

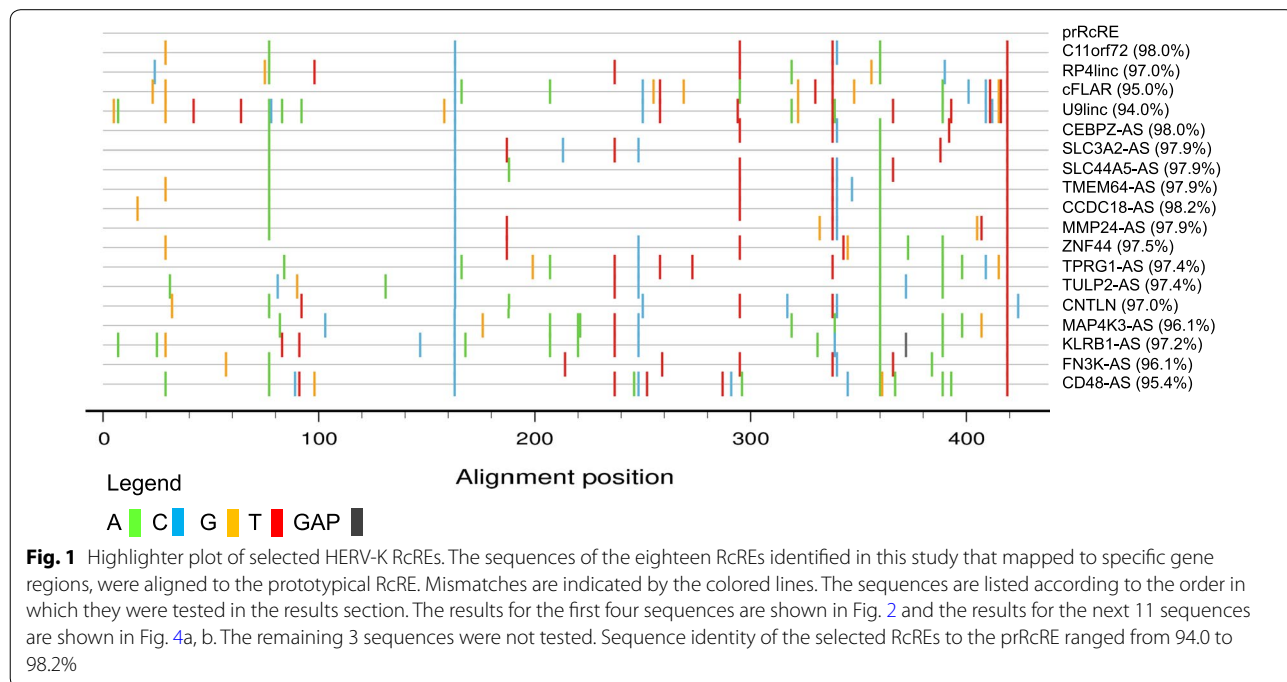
Results

Selection of genomic RcRE sequences for functional testing

We initially performed BLAST searches in human RNA databases using one of the previously analyzed RcREs (which was named prRcRE for prototype RcRE) [23]. Surprisingly, no sequences were found that showed 100% identity with the prRcRE or in our subsequent searches of the human genome. Based on these searches, we

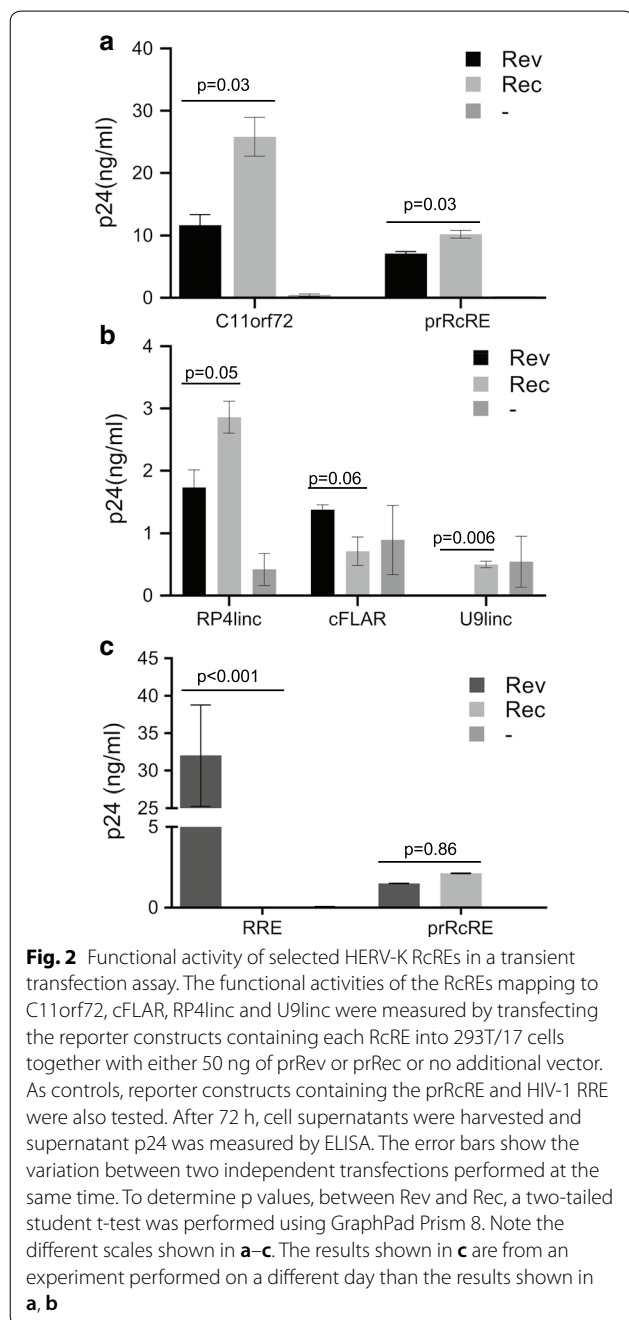
selected four sequences that showed high sequence identity to the prRcRE, present in RNAs expressed from the following genes (percent identity with the prRcRE indicated in parenthesis): C11orf72 (98%), RP4linc (97%) cFLAR (95%) and U9linc (94%) (see Fig. 1, top 5 lines). To determine if the selected RcREs could function with either Rev or Rec similarly to the prRcRE, the sequences were cloned into the pCMV-Gag-Pol reporter vector [40]. This vector produces a HIV GagPol mRNA containing the coding region within an intron, similarly to the way it is arranged within the HIV provirus [40]. Because of this, the mRNA cannot be exported from the nucleus to the cytoplasm and translated into protein without the insertion of a *cis*-acting element capable of binding to a *trans*-acting export factor. Gag and GagPol proteins are only produced in the presence of both a *cis*-acting element and a *trans*-acting export factor that can directly interact with it. Gag and GagPol proteins assemble into HIV particles and are released into the medium, where they can be easily measured by a p24 ELISA. This vector has been used by us in multiple previous publications to measure the activity of many *cis*-acting elements and *trans*-acting factors that mediate export of mRNA with retained introns [40–43].

After cloning of these elements into the vectors, they were transfected into 293T/17 cells together with plasmids expressing either HIV NL4-3 Rev or prRec [39, 43]. The results of these experiments are shown in Fig. 2. Without the co-expression of an export protein, most of the elements failed to elicit any p24 production, although



low level activity was observed with RP4linc, cFLAR and U9linc. The element located within C11orf72 functioned significantly better than all of the others and both Rev and Rec functioned in conjunction with this element, although Rec showed higher activity than Rev (Fig. 2a). The element located within the RP4linc gene also gave significant, albeit lower activity, with both Rev and Rec (Fig. 2b), whereas the other two elements showed little change in functional activity in conjunction with either

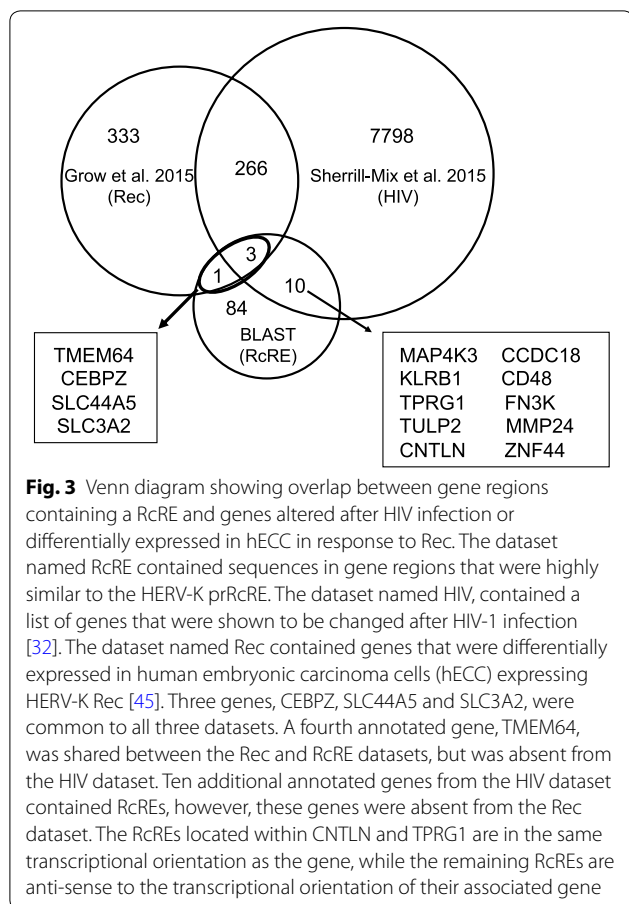
Rev or Rec. We also tested the GagPol vector containing the RRE, which confirmed previous results that indicated that Rec does not function in conjunction with the HIV-RRE (Fig. 2c). In contrast, both NL4-3 Rev and Rec functioned on the prRcRE, consistent with previous data. These experiments indicate that some human mRNAs and lncRNAs contain elements that function as RcREs, capable of working with both Rec and Rev proteins. However, they also showed that even though many sequences show high sequence identity to functional RcREs, even a few nucleotide changes can cause significant activity differences.



Selection of RcRE sequences in the human genome mapping to annotated gene regions that are common to datasets from HIV-1 infected cells and cells expressing Rec proteins

Since our results demonstrated that primary sequence alone was not sufficient to identify whether a specific element was functional with Rev or Rec, we next employed a multi-step approach to increase the probability of finding functional elements. First, we performed a BLAST search with the prRcRE against the Ensembl DNA human genomic GRCh38.87 database [44]. This resulted in a dataset of 198 sequences with greater than 94% sequence identity with the prRcRE. Within this dataset, 88 potential unique functional RcRE sequences were found to be present in 98 annotated gene regions, as some of these regions had duplicate or identical RcRE sequences. We then queried our dataset to find genes that had been previously shown to have altered expression after HIV-1 infection [32] and/or genes that were differentially expressed in human embryonic carcinoma cells (hECC) expressing exogenously added Rec [45] (Fig. 3). Genes were considered differentially expressed in these datasets if the false discovery rate (FDR) adjusted p-values were <0.01. Three genes, (CEBPZ, SLC44A5 and SLC3A2) were common to all three datasets. A fourth annotated gene, TMEM64, was shared between our dataset and the Rec dataset, but was absent from the HIV dataset. The four potential RcREs were highly similar, showing 97–98% identity to the prRcRE (Fig. 1). All of these elements are located within regions that have been designated as introns and are present in the anti-sense orientation relative to the transcription of the respective gene. The RcRE in the SLC44A5 gene region is located within the 3' LTR of a partial HERV-K provirus, 1p31.1. The TMEM64 gene region contains two solo direct repeat LTRs (451 and 452) with identical RcREs.

We also identified genes that were common to only the RcRE similarity and HIV datasets. The ten identified genes, (MAP4K3, TPRG1, TULP2, CNTLN, CCDC18, MMP24, KLRB1, FN3K, ZNF44 and CD48) all contained



elements located within introns that are similar (95.4–98.2%) to the prRcRE (Fig. 1). Two of the genes, CNTLN and ZNF44, contained elements that are sense relative to the transcription of the gene. The remaining eight genes, (MAP4K3, TPRG1, TULP2, CCDC18, MMP24, KLRB1, FN3K and CD48) contained elements that are anti-sense to the transcription of the gene. The element in CD48 is located within the 3' LTR of HERV-K provirus, 1q23.3. The locations of these elements are shown in Table 1 with the LTR annotation adopted from Subramanian et al. [14].

Functional testing of potential RcRE elements in the identified gene regions

We decided to first test the four potential RcREs that were common to both the Rec dataset and our dataset. To do this, synthetic DNA fragments containing the RcRE sequences were cloned into the HIV-1-Gag-Pol reporter construct. The resulting plasmids were then transfected into 293T/17 cells together with either pCMV-Rev or pCMV-Rec. The results of these experiments demonstrated that all of these elements functioned well with both Rev and Rec (Fig. 4a). Interestingly, the different

RcREs responded differentially to Rev and Rec. In the case of the RcREs from CEBPZ, SLC44A5 and TMEM64, higher levels of p24 were obtained with Rec than with Rev. In contrast, the RcRE from the SLC3A2 gene region showed significantly higher levels of p24 expression with Rev compared to the levels obtained with Rec. SLC3A2 also showed differential expression after infection with HIV.

We next tested seven of the ten additional potential RcRE elements (CCDC18, MMP24, TPRG1, CNTLN, ZNF44, TULP2 and MAP4K3) that were identified in the overlap of our RcRE database and the dataset of genes that were differently regulated after HIV infection. Two of the elements, MAP4K3 and TULP2, did not produce detectable levels of p24 above background with either Rev or Rec and MMP24 responded very weakly (Fig. 4b). Four of the seven elements (CCDC18, TPRG1, ZNF44 and CNTLN), showed increased activity with Rev (Fig. 4b), but only CCDC18 and ZNF44 functioned with Rec. Taken together, these results demonstrate that multiple RcREs within human genes can function with both Rev and Rec and that small sequence differences in the RcREs can result in significant functional differences and different activity with Rev and Rec. The fact that many functional RcREs were found in genes that were differentially expressed in HIV infected cells and that some of these functioned better with Rev than with Rec suggests that Rev could alter expression of the genes containing these RcREs after HIV infection.

Functional testing of RcRE sequences with different HIV-1 Rev proteins

Rev sequences derived from primary isolates of subtypes A, G and the recombinant virus CRF02_AG were previously shown to have differential activity in conjunction with the pNL4-3 RRE. To test how some of the selected RcRE sequences would function with these different Rev proteins, eight HIV-1 Rev sequences were tested with reporter vectors containing the CEBPZ, SLC44A5, SLC3A2 and TMEM64 RcREs [39]. All of the Rev proteins were expressed from pCMV vectors that were identical except for the Rev sequences. We also included the prRev and the prototype Rec protein in these experiments and a plasmid expressing SEAP was also added to each transfection as a normalization control.

As shown in Fig. 5a all of the Rev proteins functioned on the prRcRE, however their activity varied greatly, and they functioned in a different rank order compared to their function on the NL4-3 RRE, as shown in our previously published report [39]. They also demonstrated varying levels of activity on all of the RcREs (Fig. 5b). In order to more easily compare how a particular Rev

Table 1 Summary of RcREs identified in this study

Gene	HGNC	RcRE location (sense)	LTR #
ENSG00000272455	RP41inc	chr1:1,410,022–1,410,454	1
ENSG00000003402	cFLAR	chr2:201,139,217–201,139,650	139
3q12.3 (K(II), ERVK-5)		chr3:101,700,268–101,700,695	–
ENSG00000272462	U91inc	chr6:25,999,448–25,999,878	–
ENSG00000044459	CNTLN	chr9:17,445,576–17,446,008	472
ENSG00000184224	C11orf72	chr11:67,603,674–67,604,106	575
ENSG00000197857	ZNF44	chr19:12,232,143–12,232,575	765
Gene	HGNC	RcRE location (antisense)	LTR #
ENSG00000137968	SLC44A5	chr1:75,377,301–75,377,733	–
ENSG00000122483	CCDC18	chr1:93,277,102–93,277,534	40
ENSG00000117091	CD48	chr1:160,691,001–160,691,433	–
ENSG00000115816	CEBPZ	chr2:37,225,533–37,225,965	108
ENSG0000011566	MAP4K3	chr2:39,321,376–39,321,808	111
ENSG00000188001	TPRG1	chr3:189,251,690–189,252,123	208
ENSG00000180694	TMEM64	chr8:90,684,247–90,684,679	451,452
ENSG00000168003	SLC3A2	chr11:62,858,836–62,859,268	570
ENSG00000111796	KLRB1	chr12:9,600,681–9,601,113	606
ENSG00000167363	FN3K	chr17:82,744,850–82,745,277	742
ENSG00000104804	TULP2	chr19:48,889,851–48,890,283	809
ENSG00000125966	MMP24	chr20:35,262,444–35,262,876	867

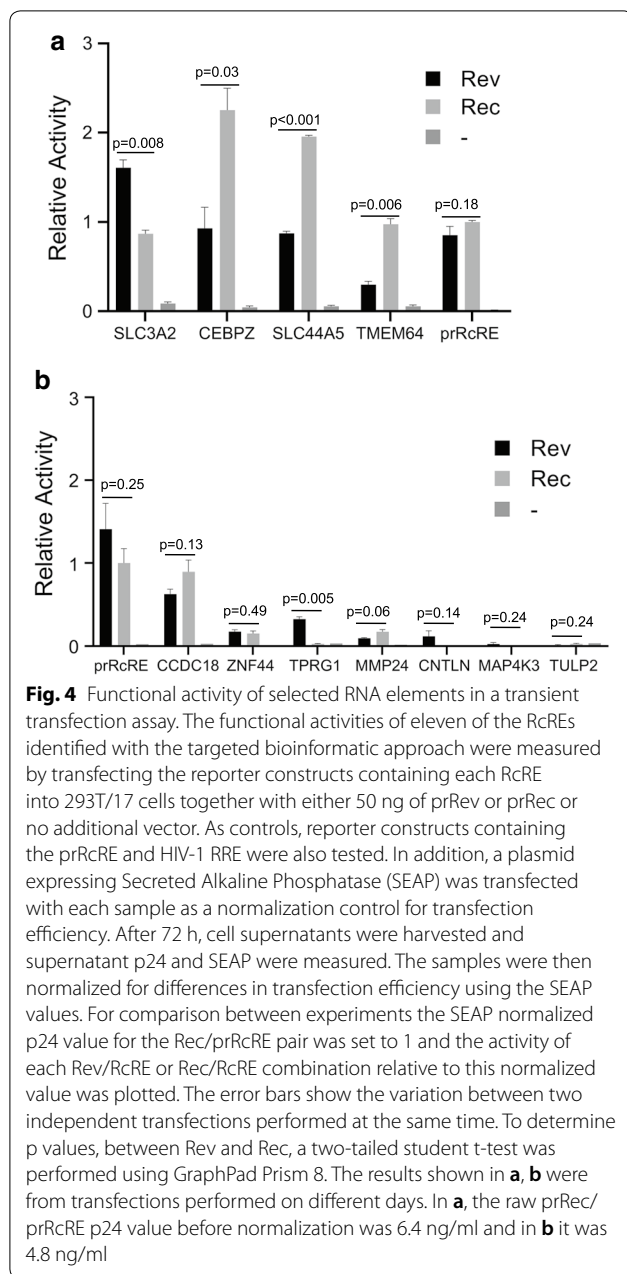
The RcRE sequences identified in this study are summarized by their Ensembl Gene ID, Hugo Gene Nomenclature Committee name (HGNC), chromosomal location in GRCh38.87/hg38, whether the sequence is sense or anti-sense to the gene transcription and HERV-K LTR5Hs annotation adopted from Subramanian et al. [14]

protein behaved with each of the RcREs, we normalized the activity of each Rev/prRcRE to 1 and plotted the activity of each Rev/RcRE combination relative to the normalized value (Fig. 5c). In this way, it can be easily seen that some Rev proteins function more efficiently with certain RcREs. For example, 6AG Rev functioned better with the CEBPZ RcRE and less well with the TMEM64 RcRE compared to its activity in conjunction with the prRcRE, whereas 1A Rev functioned about the same on the CEBPZ RcRE and less well with the TMEM64 RcRE compared to its activity with the prRcRE. On the other hand, 8G Rev functioned less well with the CEBPZ RcRE, and hardly at all with the TMEM64 RcRE compared to its activity with the prRcRE. We then tested seven additional RcRE sequences (CCDC18, MMP24, TPRG1, CNTLN, ZNF44, TULP2 and MAP4K3) with three of the HIV-1 Revs (1A, 6AG and 8G) that showed high, medium and low p24 expression on the HERV-K prRcRE. Again, the different RcREs functioned with differential activity with the different Revs and Rec. However, in these cases, the rank order of activity of all of the RcREs tested remained nearly the same with all of the Rev proteins, with minor variations compared to Rec (Additional file 1: Figure S1A and S1B). Taken together, these results indicate that different RcRE sequences respond differentially to different Rev proteins, suggesting that Rev proteins from different

HIV primary isolates will likely influence host cell gene expression in different ways.

Identification of HERV-K transcripts present in total and cytoplasmic RNA in cells transduced with retroviral vectors expressing HIV Rev and/or Tat or HERV-K Rec

To directly analyze if expression of regulatory HIV proteins (Tat and Rev) and the HERV-K Rec protein could change HERV-K mRNA expression in T-lymphoid cell lines, we transduced SupT1 cells with MSCV-derived retroviral vectors expressing Rev, Tat, Rec or both Rev and Tat. As a control, we also transduced cells with a retroviral vector lacking an insert, empty vector (EV). Each retroviral vector also expressed a fluorescent protein from an internal ribosome entry site (IRES) (see “Methods”) to allow identification and sorting of the cells that were transduced. Forty-eight hours post transfection, cells were sorted by flow cytometry to isolate the transduced populations. Both total and cytoplasmic polyA+ RNA was isolated and stranded cDNA libraries were prepared for RNA sequencing (RNAseq). Sequencing was performed on the Illumina HiSeq platform (see “Methods”). Trimmed reads were aligned to the hg19 version of the human genome using HISAT2. The BAM files were then filtered to obtain only the reads that mapped uniquely to one proviral location. To be able to count reads



emanating from HERV-K proviruses, we created a gene transfer format (GTF) file integrating all known HERV-K proviral genomic coordinates into the Ensembl GTF, hg19 build [44]. This enabled us to identify the HERV-K loci that were transcriptionally active [14, 17].

When total RNA was analyzed, expression from 9 HERV-K loci (1q21.3, 3q12.3, 4p16.1b, 6p21.1, 6q25.1, 11q12.3, 19q13.12b, 20q11.22 and 22q11.23) was identified in all samples with only very slight differences between the samples transduced with the different vectors. Some reads also mapped to HERV-K locus

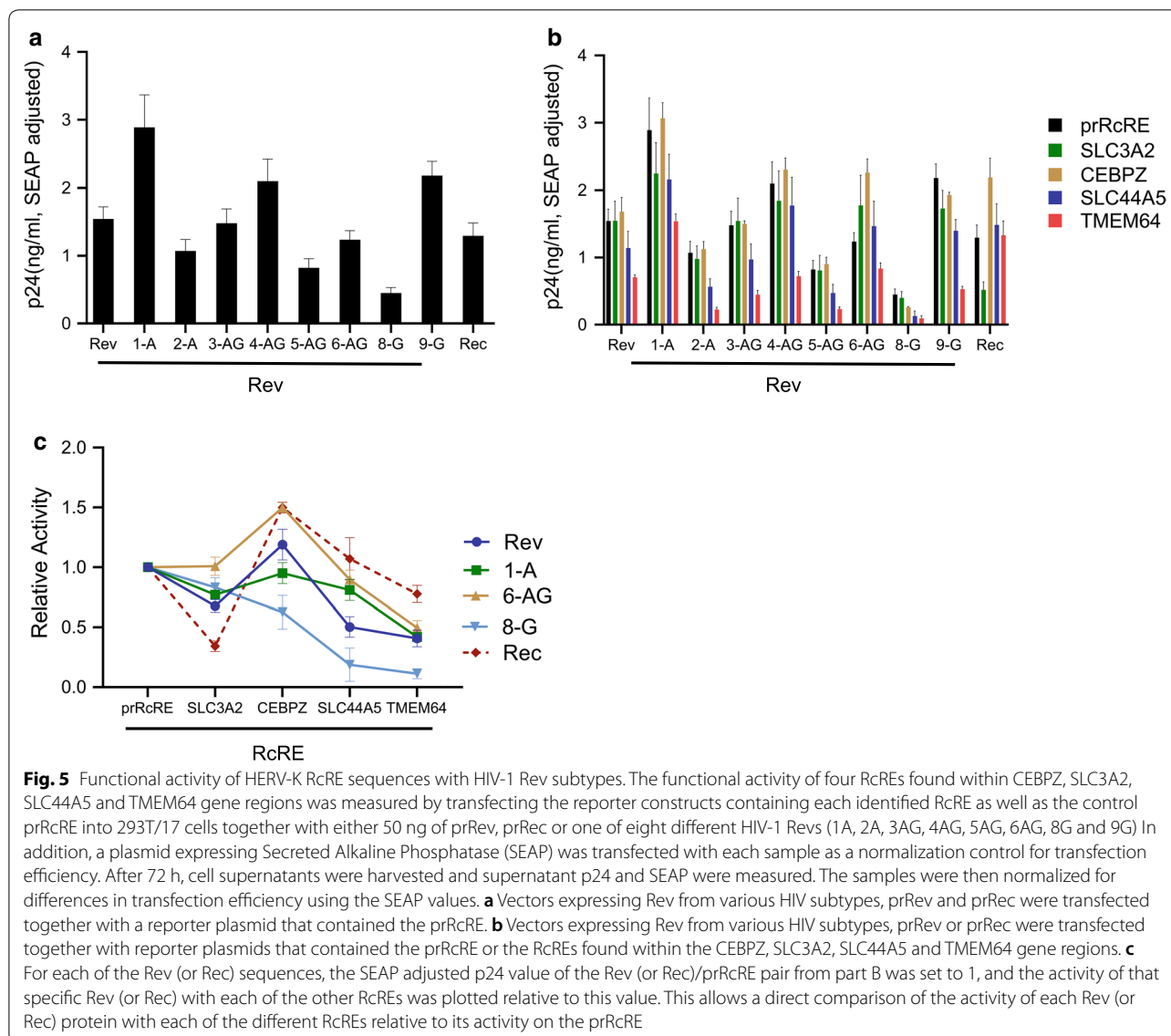
11q22.1, but only in the sample that received the Rec vector (Fig. 6a). These reads appeared to originate from the exogenously expressed Rec, since the sequence of the reads were a perfect match to the sequences of Rec that are in the vector. When cytoplasmic RNA was analyzed a very different picture emerged. The samples that were expressing Rev or both Tat and Rev contained an increased number of reads for HERV-K proviruses 3q12.3, 4p16.1b and 22q11.23, with the greatest differences being seen for the 3q12.3 virus (Fig. 6b).

A quantitative analysis, using DESeq2, of the read counts mapping to 3q12.3, is presented in Fig. 7. In this virus, the reads mapped across the entire proviral genome (Fig. 7a). Cytoplasmic samples from cells transduced with a Rev-expressing construct, had 4.2-fold (*p* value = 1.13E−08) more reads uniquely mapping to this locus compared to the cells transduced with the empty vector and the cytoplasmic samples from cells transduced with both Tat and Rev had 5.4-fold (*p* value = 4.10E−10) fold more reads (Fig. 7c). The fact that the increase in read counts maps across the entire proviral locus strongly suggests that Rev has facilitated the nucleocytoplasmic export of the full length unspliced HERV K genomic RNA in the transduced cells. Interestingly, cells transduced with HERV-K Rec, showed only a small increase in reads (1.4-fold). The differences in the number of reads mapping between total and cytoplasmic RNA samples in the other 2 proviruses were also quantified but were much less dramatic (1–2-fold). (Additional file 2: Figure S2).

As a control, we also examined the reads mapping to the gene encoding NEAT1 lncRNA. This gene is known to encode a full length unspliced RNA (NEAT1_2) that remains nuclear, localizing to paraspeckles, as well as a shorter form whose localization is less clear (NEAT1_1) [46]. Additional file 3: Figure S3 shows that reads derived from total RNA mapped across the whole NEAT1 gene region. However, in cytoplasmic RNA, only reads mapping to the region corresponding NEAT 1_1 were present. This serves as a control to confirm that our cytoplasmic RNA prep was not contaminated with RNA that should remain nuclear.

The 3' LTR of the HERV-K 3q12.3 provirus contains a RcRE that functions better with Rev than with Rec

Since transcribed HERV-K 3q12.3 mRNA was efficiently exported to the cytoplasm in the presence of Rev, it was of interest to analyze whether the 3q12.3 provirus contains RcRE sequences that function in conjunction with Rev. Since the RcRE is present in the U3 region of the HERV-K LTR, only the 3' RcRE would appear in RNA transcribed from the provirus. Nevertheless, we tested both the 5' and 3' RcRE sequences in this provirus by



cloning them into the Gag-Pol reporter construct and testing them with the different Rev proteins that we used in the experiments described above.

As shown in Fig. 8a, all of the HIV-1 Rev proteins functioned well on the 3' RcRE from this provirus. In contrast, very little function was seen in conjunction with HERV-K Rec. This correlated well with the RNAseq data that showed that only Rev significantly promoted the export of the HERV-K proviral RNA containing this RcRE. The different Rev proteins functioned in a somewhat different rank order than they did on the prRcRE, highlighting the fact that different Rev proteins show different activity on the RcREs due to unknown factors that affect their interactions. As in shown in Fig. 8b, the 5' RcRE from 3q12.3 was completely unresponsive to any

of the proteins tested in spite of the fact the two RcREs are highly similar, showing 96% sequence identity to each other and 96.7% (3') and 95.6% (5') sequence identity to the prRcRE (Fig. 8c).

Discussion

Many studies have described increased HERV-K expression in HIV infection and HIV infected cells [33–36, 47]. There have also been reports of immune responses to HERV-K in HIV infected individuals, and, in a recent report, it was shown that antibodies directed against HERV-K Gag were present in elite controllers [48]. It has also been shown that HIV Tat can enhance HERV-K transcription from several proviral loci [37, 38]. However, there have been no previous studies that have analyzed

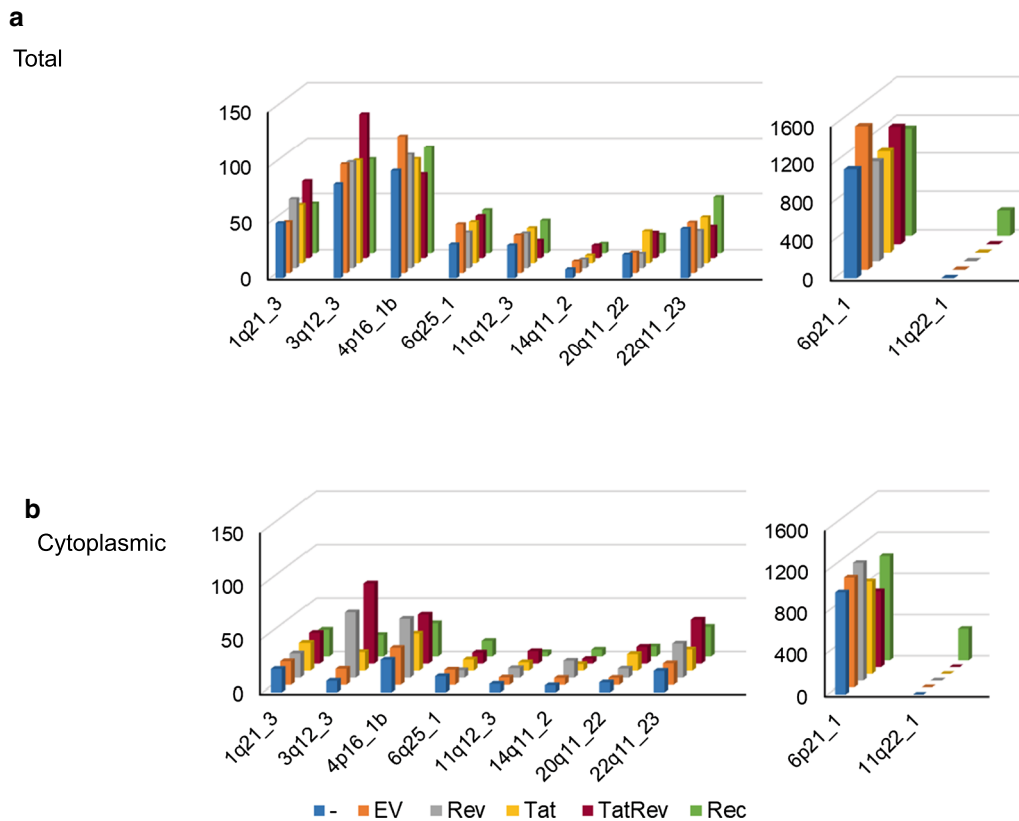
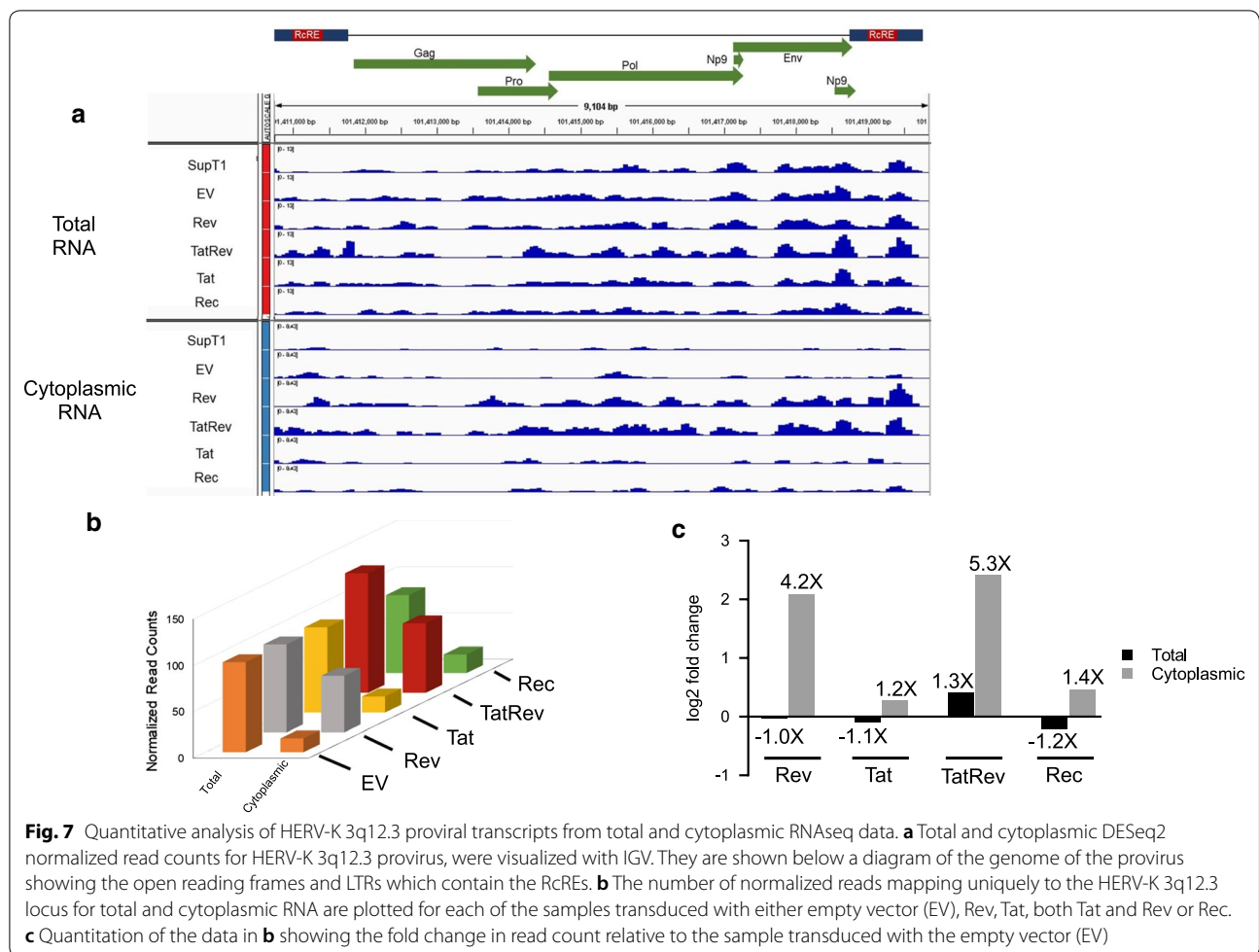


Fig. 6 Identification of HERV-K proviral transcripts from total and cytoplasmic RNAseq data. SupT1 cells were transduced with retroviral vectors expressing a fluorescent protein marker and Rev, Tat, Rec, a combination of Rev and Tat, or only the fluorescent protein (EV). The fluorescent transduced cells were isolated by flow cytometry. SupT1 cells that were mock transduced and subjected to collection by flow cytometry were also included as a control (–). At 48 h post transduction, both total and cytoplasmic RNA was prepared and stranded RNAseq libraries were constructed. Illumina sequencing was performed yielding $\times 2$ 150 bp paired-end reads. Reads were then mapped to the human genome (hg19) using HISAT2 and HERV-K loci were quantified with DESeq2 using a custom GTF file. Normalized read counts that mapped uniquely to each HERV-K locus are shown for **a** total RNA or **b** cytoplasmic RNA. The reads mapping to 11q22.1 in the Rec sample are derived from the vector that expressed Rec and not the proviral locus. Quantitation of these reads and the reads mapping to 6p21_1 are presented in the right panel because they are expressed at a higher level than the others

the effects of Rev expression on HERV-K expression, although studies conducted many years ago reported that Rev can enhance expression of unspliced RNA from reporter vectors through direct interactions with prototype RcREs cloned from unknown locations in the human genome [23, 31]. Based on the advances in sequencing that led to the publishing of the human genome, we now know that there are several HERV-K proviruses that contain potential functional RcREs [14, 17]. In addition to these, there are many solo HERV-K LTRs that are likely to contain functional RcREs [14].

Curiously, the previously studied functional RcREs do not show an exact sequence match to any RcREs identified in the current versions of the human genome. However, here we show that Rev can indeed function in conjunction with many of the HERV-K RcREs that are present in the human genome and that many of them

are in protein-coding gene regions. Some of the RcREs that we identified and tested have the same sense as the coding region of the gene they reside in. However, several of the RcREs are in the anti-sense orientation relative to overlapping protein coding genes. In some cases, a non-coding potential antisense RNA has been identified with the same sense as the RcRE, in other cases nothing is known about transcription on the “anti-sense strand. Recently it has been shown that many genes encode overlapping anti-sense RNA [49, 50], which can sometimes change regulation of a protein coding gene on the opposite strand. Thus, it is possible that Rev interactions with RcREs in anti-sense RNAs could modulate gene expression [19]. Whether this occurs in the case any of the genes where we have identified “anti-sense” RcREs (see Table 1) requires further study.



Most interestingly, our studies clearly show that Rev can act to promote export of endogenously expressed HERV-K RNAs. The provirus that showed the most significant response to Rev was the provirus located at 3q12.3. This provirus has previously been shown to be transcriptionally active in many cells, including HIV infected cells [14, 51, 52]. Our results showed that expression of Rev led to an increase of the full-length mRNA in cytoplasmic RNA and also that expression of Tat and Rev together led to an increase of this RNA in total RNA. This suggests that Tat increased transcription, generating mRNA that could be exported by Rev.

Our data also clearly show that different Rev proteins function with different efficiencies in conjunction with different RcREs and that some RcREs function better with some Rev proteins than with Rec. This result dovetails nicely with our previous finding that Rev proteins and RREs from different primary isolates can have significantly different levels of activity.

The fact that HIV-1 Rev promotes the nucleo-cytoplasmic export of unspliced mRNAs expressed from the Type

I 3q12.3 HERV-K provirus, whereas Rec has little effect was an especially surprising result. Type 1 viruses cannot express Rec because of the deletion of essential parts of the Rec ORF. However, since Rec can act in *trans*, endogenous Rec expression could lead to export of unspliced mRNA from Type I proviruses, if a functioning RcRE is present. However, in the case of 3q12.3, our results demonstrated that both the 5' and 3' RcREs present in the LTRs of this provirus function very poorly with the prototypical Rec that was tested. Although it remains possible that different endogenous Rec proteins expressed in other cells may work better in conjunction with the 3q12.3 RcRE, it is clear that in SupT1 cells the unspliced mRNA expressed from this provirus is only exported to the cytoplasm in response to Rev expression. We do not know if there are other HERV-K proviruses that will respond to Rev and Rec in a similar fashion, since SupT1 cells only show RNA expression from a few. Since HERV-K proviruses and their expression are polymorphic in the human population and there are many different HIV subtypes, there is a clear potential for differential effects of

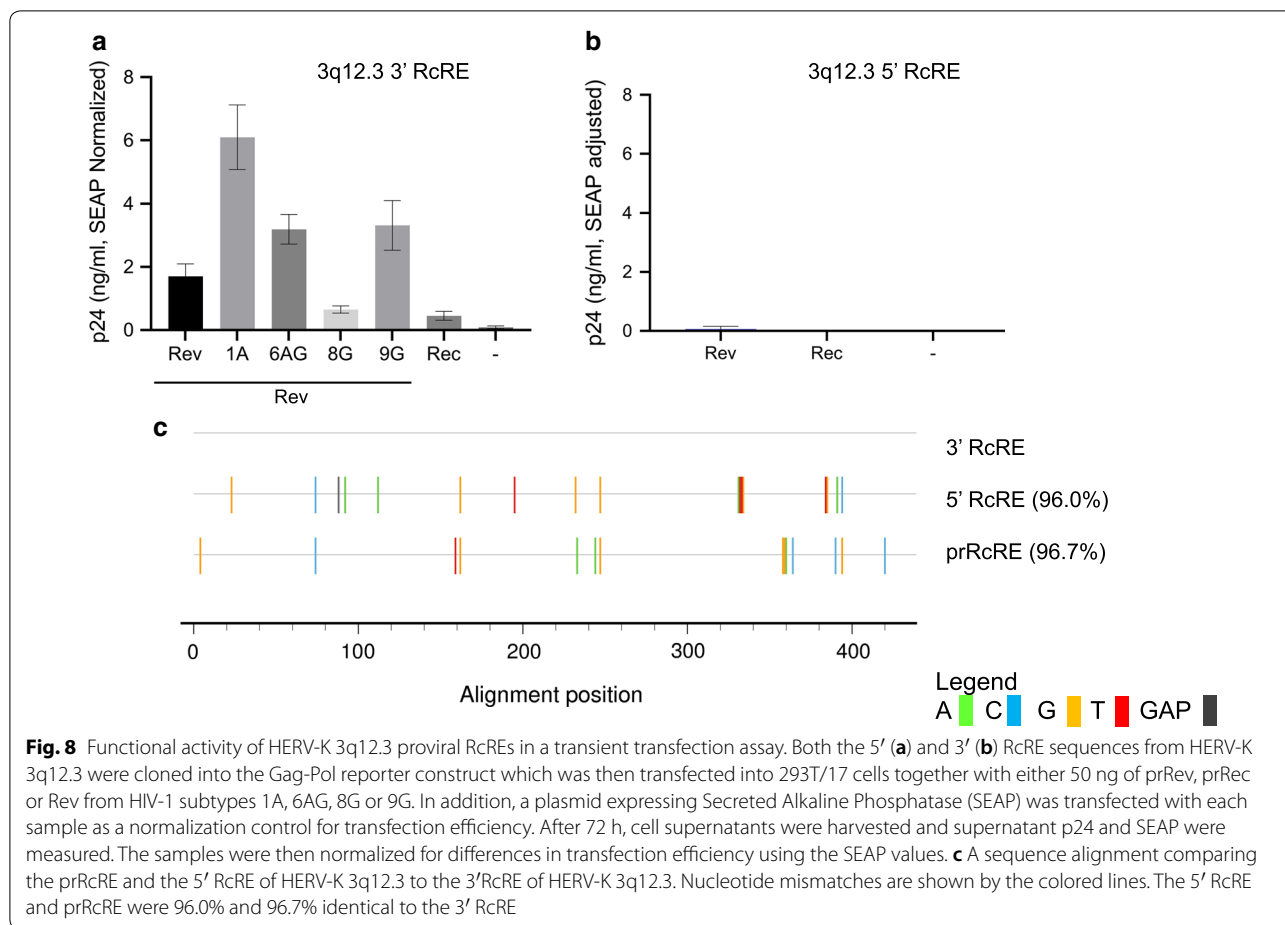


Fig. 8 Functional activity of HERV-K 3q12.3 proviral RcREs in a transient transfection assay. Both the 5' (a) and 3' (b) RcRE sequences from HERV-K 3q12.3 were cloned into the Gag-Pol reporter construct which was then transfected into 293T/17 cells together with either 50 ng of prRev, prRec or Rev from HIV-1 subtypes 1A, 6AG, 8G or 9G. In addition, a plasmid expressing Secreted Alkaline Phosphatase (SEAP) was transfected with each sample as a normalization control for transfection efficiency. After 72 h, cell supernatants were harvested and supernatant p24 and SEAP were measured. The samples were then normalized for differences in transfection efficiency using the SEAP values. **c** A sequence alignment comparing the prRcRE and the 5' RcRE of HERV-K 3q12.3 to the 3'RcRE of HERV-K 3q12.3. Nucleotide mismatches are shown by the colored lines. The 5' RcRE and prRcRE were 96.0% and 96.7% identical to the 3' RcRE

HERV-K/HIV interactions in different infected individuals. This should be taken into account in studies of the potential role of HERV-K in cancer and other diseases in HIV patients, since the effects on HERV-K expression could be very different depending on both the endogenous HERV-K expression profile and the HIV sequence.

Previously published reports have examined HERV-K(HML-2) proviral expression in uninfected and HIV-1 infected primary CD4+ cells [51, 52]. In these studies, it was found that two HERV-K loci, 1q22 and 3q12.3, produced the majority of the proviral HERV-K RNAs. Five additional loci, 1q23.3, 6q25.1, 8q24.3, 19q13.42 and 12q24.33, were also transcriptionally active, albeit at lower levels than 1q22 and 3q12.3. Another report studied HIV-1 infection in primary CD4+ T-cells and noted a small increase in overall HERV-K expression compared to uninfected cells [32]. However, our further analysis of this RNAseq dataset (data not shown), reveal eight HERV-K loci, 1q21.3, 1q22, 1q23.3, 3q12.3, 4p16.1a, 11q12.3, 14q11.2 and 19q13.12b, as being transcriptionally active. Importantly, the RNA from the provirus at 3q12.3 that contains the RcRE that responds to

Rev, was identified as active in all three previous studies using primary cells. Furthermore, in the HIV-1 infected CD4 T-cells, the RNA from 3q12.3, increased by 1.44-fold (pvalue: 0.01) compared to uninfected CD4+ T-cells [32]. RNA expression from two HERV-K loci, 1q22 and 1q23.3, were in common in the three published reports examining primary CD4+ T-cells, but were not seen in our analysis of RNA in SupT1 cells.

Whereas the effects of Rev on proviral HERV-K expression may be the most important finding in our study, we started by identifying potential RcREs in HERV-K solo LTRs present in non-viral protein coding and non-coding genes. We originally based our selection of sequences to test based simply on how similar they were in sequence to the prototype RcRE that was analyzed in previous studies. While this did indeed lead to the identification of RcREs that functioned with varying efficiencies with both Rev and Rec, it became clear that primary sequence is not a good indicator of RcRE function. This may be best illustrated by fact that the RcRE located within the 3' LTR from the 3q12.3 HERV-K provirus was shown to function extremely well with some HIV Revs, but not with others

and also rather poorly with Rec (see Fig. 8). In contrast, the 5' RcRE from this provirus did not function with either Rev or Rec, in spite of the fact that there were only a few primary sequence differences between the 5' and 3' RcRE and the prototype RcRE. Additionally, the RcRE which mapped to the SLC3A2 region clearly functioned better with the prototype Rev compared to its activity with the prototype Rec. These results highlight that functionality cannot currently be predicted simply by an RcRE sequence analysis. Thus, functional activity experiments using reporter assays like the one we describe here are essential to evaluate the extent to which a specific RcRE will function in conjunction with either a specific Rev or Rec sequence.

Our RNAseq analysis also identified two more HERV-K proviruses (4p16.1b and 22q11.23) where there was an increase in the amount of unspliced mRNA in the cytoplasm, when HIV-1 Rev or Tat and Rev were present, although to a much lesser extent than seen for 3q12.3. While 3q12.3 is a full-length intact provirus with a functional 3' RcRE, the 4p16.1b and 22q11.23 proviruses have truncated 3' LTRs with only partially intact RcREs. It remains to be determined how Rev may act to promote nucleo-cytoplasmic export of the mRNA expressed from these two proviruses.

Previously published reports demonstrate that transcription for both 3q12.3 and 4p16.1b is initiated in their respective 5' LTRs, while the transcription for 22q11.23 is through a separate LTR, located a little over 500 bp upstream of the provirus [53]. Notably, it has been reported that the 5' LTR from the provirus 3q12.3 has evolved to include a duplication of the HOX-PBX transcription binding site as well as a SNP in the RFX3 transcription factor binding site [54]. This may explain why this provirus is highly transcribed in many different cell types and why it no longer is able to function as a RcRE.

Most reading frames in HERV-K 22q11.23 and 4p16.1b have premature stop codons, but although the *rec* gene of 4p16.1b is heavily mutated relative to the prototype HERV-K its reading frame remains open. The 3q12.3 provirus, on the other hand, has maintained open reading frames for both *gag* and *np9*. Thus, Rev mediated export of mRNA expressed from the 3q12.3 provirus could lead to the expression of HERV-K Gag and the formation of immature HERV-K virus particles. Whether this could occur with this or other HERV-K proviruses in an infected individual would depend on the combination of the RcRE that is present in a transcribed provirus and the particular Rev protein that was expressed. Consistent with this notion, an increase in HERV-K mRNAs and proteins, as well as antibody responses to HERV-K during HIV-1 infection, have previously been reported [36, 48, 55, 56]. A recent article reporting on increased

HERV-K capsid antibody levels in elite controllers suggest that immune responses to HERV-K structural proteins could contribute to HIV immune control [48]. Thus it will be of clear interest to further define the RcREs present in HERV-K mRNAs that are expressed in HIV infected individuals, especially those with strong anti-HERV-K immune responses, and to determine whether the Rev proteins expressed in these individuals can function in conjunction with these RcREs. It has also been reported that the 3q12.3 provirus is actively transcribed in patients with Amyotrophic Lateral Sclerosis (ALS) [57] and although this remains controversial, it has been proposed that HERVs plays a pathophysiological role in this lethal disease (for a review see [58]). Some HIV-infected patients develop neurological manifestations that resemble classical ALS, although it occurs at a younger age and there has been reports of improvement following the initiation of antiretroviral therapy [59]. In view of the results presented here, it may be of interest to address whether HIV Rev expression leads to increased expression of HERV-K Gag proteins in the brain and immune responses to HERV-K in these patients.

The mechanism(s) responsible for the difference in relative HIV-1 Rev or HERV-K Rec activity when paired with different HERV-K RcREs was not examined in this study. It has been previously proposed that different stem-loops in the prototypical HERV-K RcRE sequence may be involved in binding to Rev and Rec [31, 60, 61]. For HIV-1 Rev, it has been suggested that there may be two discrete binding sites that lie within stem-loop 2 and 7, while for HERV-K Rec, binding between the protein and RNA may be much more complex, involving folding and three-dimensional structure rather than discrete binding sites within the HERV-K RcRE. Our results in this study demonstrate that the RcREs that are found within SLC3A2, TPRG1 and CNTLN displayed higher functional activity levels with HIV-1 Rev than with HERV-K Rec. Studying additional HERV-K RcREs in other areas of the genome and their functional activity as well as performing SHAPE analysis may be helpful in further pinpointing areas of the RcREs that are important for HIV-1 Rev binding.

Conclusions

During this study we identified HERV-K RcRE sequences that functioned with varying efficiencies in response to different HIV-1 Rev proteins. Some of the HIV-1 Rev proteins functioned better with several of the selected HERV-K RcREs than with HERV-K Rec. Additionally, we showed that the RcRE found within the 3' LTR of HERV-K 3q12.3 functioned well with many different Rev proteins, but hardly at all with the prototypical Rec protein. Consistent with this, we showed that expression of Rev

in SupT1 cells resulted in a significant increase in cytoplasmic, unspliced viral mRNA from the HERV-K 3q12.3 provirus which has a complete open *gag* reading frame. HIV Rev could thus change HERV-K protein expression, resulting in novel immune responses to these viruses. Finally, our results indicate that effects of HIV Rev on HERV-K expression in infected individuals will differ depending on variation in HERV-K expression and the HIV subtype.

Methods

Identification of genomic HERV-K RcRE sequences

A list of sequences highly similar to the HERV-K RcRE was generated through a BLAST search using the prototypical HERV-K RcRE sequence [23] to search the Ensembl DNA, non-coding RNA, and cDNA human genomic databases (GRCh38.87) [44]. Sequences with greater than 94% sequence identity were identified and listed.

Two other gene lists were retrieved from previously published studies identifying differential gene expression during HIV-1 infection [32] and differential gene expression when HERV-K Rec was expressed in hECC [62]. Genes were considered differentially expressed if the false discovery rate (FDR) adjusted *p*-value was $p < 0.01$.

Plasmids

All plasmids utilized were given the name pHRXXXX for identification and to facilitate requests. Synthetic double stranded DNA sequences (gBlocks™; Integrated DNA Technologies, Coralville, IA) corresponding to RcRE sequences from the gene regions identified in the gene list were synthesized and cloned into pHR2739, a pCMV-GagPol reporter plasmid lacking the RRE [63] such that the RcREs were positioned immediately downstream from the intron containing the GagPol coding region. To facilitate cloning, the gBlocks™ DNA fragments were designed with 25 bp on either end overlapping the ends of the linearized pCMV-Gag-Pol plasmid. Fragments were cloned using the NEBuilder HiFi DNA assembly kit with a vector to insert ratio of 1:2, following the manufacturer's directions. This created the plasmids pHR5342 (C11orf72), pHR5336 (cFLAR), pHR5341 (U9linc), pHR5340 (RP4linc), pHR5534 (CEBPZ), pHR5540 (SLC3A2), pHR5538 (SLC44A5), pHR5536 (TMEM64), pHR5843 (CNTLN), pHR5908 (ZNF44), pHR5846 (CCDC18), pHR5684 (MAP4K3), pHR5835 (TPRG1), pHR5639 (TULP2), pHR5845 (MMP24), pHR5812 (3q12.3_3'_RcRE), and pHR5813 (3q12.3_5'_RcRE). pCMV-GagPol-RRE (pHR3442) has been used previously to measure Rev function [43]. It was constructed in the same way as the pCMV-GagPol-RcRE plasmids described above, except that a DNA fragment containing

the RRE, amplified by PCR from pNL4-3, was inserted into the backbone by traditional cloning methods rather than using the NEBuilder HiFi DNA assembly kit. The sequence of each inserted gBlock or PCR fragment in each plasmid was confirmed using Sanger DNA sequencing. Plasmids expressing Rev from several different HIV subtypes and the viruses from which they are derived have been previously described [40, 44]. These included pHR5209 (subtype A-1), pHR5182 (subtype A-2), pHR5183 (subtype AG-3), pHR5185 (subtype AG-4), pHR5187 (subtype G-9), pHR5202 (subtype AG-5), pHR5203 (subtype AG-6), pHR5204 (subtype G-8). The plasmid expressing the prototypical Rev sequence (prRev), pHR30, which was derived from a clade B isolate, has been described previously [64].

Cell culture and transient transfections

Twenty-four hours prior to transfection, 1.7×10^5 293T cells were seeded into 12-well tissue culture plates in 1 ml medium (DMEM, 10% Bovine Calf Serum (BCS), 50 mg/ml gentamicin). To test the activity of the HIV-1 RRE and HERV-K RcREs, each well was transfected with 50 ng of either pCMVRev (pHR30) or pCMVRec (pHR5313), 2 µg of pCMV-Gag-Pol-RRE (pHR3442) or pCMV-Gag-Pol-RcRE (pHR5338) and 100 ng of a plasmid expressing secreted placental alkaline phosphatase (SEAP) (pHR1831) using Turbofect™ transfection reagent (ThermoFisher). Cell supernatants were collected 72 h post-transfection, and levels of p24 were determined by ELISA as previously described [65]. The SEAP levels of the supernatants were determined by a chemiluminescent method (Roche) and were used to normalize the differences in transfection efficiencies.

Retroviral vectors, production and transduction

The MSCV retroviral vector backbone was utilized to make vectors that express Rev, Rec or Tat as well as a fluorescent protein. Specifically, sequences encoding the respective proteins were cloned into an MSCV-derived construct, upstream of an IRES driving the expression of a fluorescent protein to create the constructs MSCV-Rev-IRES-eGFP (pHR5366), MSCV-Tat-IRES-mCherry (pHR5447) and MSCV-Rec-IRES-eGFP (pHR5450). MSCV-IRES-eGFP (pHR53650) was also utilized as an "empty" vector control (EV). The backbone pMSCV-IRES-fluorescent protein vectors were gifts from Dr. Dario Vignali (unpublished), obtained through Addgene.

For retroviral vector production, 24 h prior to transfection, 8×10^6 293T cells were seeded into 15 cm tissue culture plates in 20 ml of growth medium (DMEM, 10% BCS, 50/ml gentamicin). Transient transfections were then performed using the calcium phosphate method [66] to deliver 40 µg of each MSCV, 10 µg of pMD2.G

expressing VSV-G, a gift from Dr. Didier Trono [67] and 30 µg of pHIT60 expressing MLV Gag-Pol, a gift from Dr. Alan Kingsman, Oxford University, Oxford, England [68] to each plate. After 5 h, cell culture medium from the transient transfections was removed and replaced with 12 ml of fresh medium. Viral vector stocks were harvested at 24, 48 and 72 h then concentrated by ultracentrifugation (Beckman Coulter Optima XL-100) for 1 h at 25 K in an SW28 rotor and resuspended in PBS.

Vector titrations were performed by preparing six 2-fold dilutions of concentrated vector stocks (1:200, 400, 800, 1600, 3200, 6400, 12,800) in PBS. One milliliter of each diluted stock was then added to 2.5×10^5 SupT1 cells with 10 µg of polybrene, incubated for 4 h at 37 °C in an incubator containing 5% CO₂. The cells were then washed 2× with PBS and resuspended in 1 ml of medium. After 48 h, cells were harvested and washed 2× with PBS containing 10% BCS before they were analyzed for GFP or mCherry positive cells using the Attune NxT flow cytometer (Invitrogen). Virus titers were calculated when positive cells fell between 2 and 20% in the appropriate dilution using the following formula: $(F \times \text{cells/volume}) \times \text{dilution factor}$. Where F is the frequency of positive cells, cells is the total number of target cells infected, V is the volume of inoculum and the dilution factor is the virus dilution factor.

For cell transduction, SupT1 cells were split 24 h prior to adding viral stocks to 1×10^6 cells resuspended in 1 ml of PBS at an MOI of 2 with 10 µg/ml polybrene. Cells and virus were incubated for 4 h at 37 °C, 5% CO₂, then washed twice and resuspended in 5 ml of growth medium (RPMI, 10% FCS, gentamicin). After 48 h, cells were sorted by flow cytometry for expression of GFP, mCherry, GFP and mCherry using the FACS Aria (BD Biosciences). Only cells expressing the appropriate fluorescent markers were chosen for RNA isolation.

RNA isolation and sequencing

Total and cytoplasmic RNA from three biological replicates of SupT1 cells transduced with the empty MSCV vector (EV) or MSCV vectors expressing Rev, Tat, Tat and Rev and Rec together with the fluorescent proteins, were isolated from cells sorted by flow cytometry. The methods used for total and cytoplasmic RNA extraction were previously described [69], with the following modifications. For the total RNA extraction, the sorted SupT1 cells were pelleted, then washed twice with 5 ml of cold phosphate-buffered saline (PBS). After the final wash, the cells were lysed in 500 µl of lysis buffer containing 0.2 M Tris-HCl (pH 7.5), 0.2 M NaCl, 1.5 mM MgCl₂, 2% sodium dodecyl sulfate (SDS) and 200 µg

of proteinase K per ml, and incubated for 1 to 2 h at 45 °C. For cytoplasmic RNA extraction, the sorted SupT1 cells were pelleted then washed twice with 5 ml of ice-cold phosphate-buffered saline (PBS). After the final wash, the cells were pelleted and resuspended in reticulocyte standard buffer (RSB) (10 mM Tris-HCl (pH 7.4), 10 mM NaCl, 1.5 mM MgCl₂) followed by the addition of an equal volume of RSB with 0.1% IgePal™. Nuclei were cleared by two sequential centrifugations at 13,000 rpm in an Eppendorf centrifuge at +4°C, prior to the addition of 2× PK buffer [200 mM Tris-HCl (pH 7.5), 25 mM EDTA, 300 mM NaCl, 2% SDS, 400 µg of proteinase K/ml] to the cleared supernatant. The lysates were then incubated at 37 °C for 30 min.

Total and cytoplasmic RNA lysates were then extracted once with an equal volume (1:1) of phenol and chloroform-isoamyl alcohol (24:1), followed by two extractions with only chloroform-isoamyl alcohol (24:1). Sodium acetate (3 M, pH 5.5) was then added to the final extractions for a final concentration of 0.3 M prior to precipitation with 2.5 volumes of 200 proof ethanol (−20 °C). The RNA was pelleted for 1 h at 4 °C 3000 RPM (3014 g) in a Baxter Cryofuge 6000 centrifuge, then washed twice with 70% ethanol and air dried prior to the addition of RNase/DNase free water. Total RNA was DNase digested (RQ1 RNase-free DNase, Promega) then extracted and precipitated as before. Final RNA concentrations were determined with a Qubit RNA HS assay kit (Qubit 3.0 fluorometer, ThermoFisher).

NGS sequencing

Stranded libraries were prepared by Novogene (Beijing, China) from total and cytoplasmic RNA using reagents from New England Biolabs (NEB). First, polyA+ RNA was isolated from total or cytoplasmic RNA using poly-T magnetic beads. The polyA containing RNA was then fragmented with fragmentation buffer (NEB) and first strand cDNA was synthesized using random hexamers and M-MuLV Reverse Transcriptase (RNase H-). Second strand cDNA synthesis was performed using DNA Polymerase I and RNase H while substituting dTTP with dUTP. The double stranded cDNA was purified using AMPure XP beads (Beckman Coulter, Beverly, USA). To ensure that the library was stranded, the second strand cDNA was digested by USER (Uracil-Specific Excision Reagent, NEB) prior to selecting for fragments approximately 150–200 bp in length with AMPure XP beads. The final library was amplified by PCR, then re-purified with AMPure XP beads prior to sequencing on the Illumina platform at Novogene.

Bioinformatics analysis

FASTQ files were trimmed with Trimmomatic-0.38 using the standard settings (ILLUMINACLIP:TruSeq3-PE.fa:2:30:10 LEADING:3 TRAILING:3 SLIDING-WINDOW:4:15 MINLEN:36), then assessed for quality using FASTQC software. Trimmed reads were aligned to hg19 (GRCh37) using HISAT2 [70] (`hisat2 -p2 -q -x -1 $read1 -2 $read2`) then passed through samtools view (-bS) to generate a BAM file for each alignment. The aligned reads were filtered to ensure that paired reads were uniquely aligned to the best sequence match one time using the following command: `samtools view -h -f 0x2 file.bam | awk 'substr($1, 0, 1)=="@" || $0 !~/ZS:/' | samtools view -h -b > filtered_file.bam`. A custom GTF file of the 94 HERV-K proviral chromosomal locations was created and incorporated into the GRCh37 GTF file to quantify HERV-K proviral aligned reads using Rsubread and FeatureCounts [71, 72]. A new GTF file with the custom HERV-K GTF file incorporated into the GRCh37 GTF file was generated by merging the two files and then sorting on column 1 (chromosome number) followed by sorting on column 4 (chromosome start location). Differential expression analysis was performed using DESeq2 [73] on the reads quantified by featureCounts [71, 72] using the merged GTF file. Aligned reads for HERV-K 3q12.3 were visualized with IGV viewer after normalizing using DeepTools [74]. BAM files for each condition were normalized using the bamCoverage argument (`bamCoverage -bam yourfile.bam -o yourfile.norm.bw \ --normalizeUsing FPKM`). The normalized bigwig files were merged with IGV tools to visualize the aligned reads with IGV for all replicates of each condition [74–76].

Supplementary information

Supplementary information accompanies this paper at <https://doi.org/10.1186/s12977-019-0505-y>.

Additional file 1: Figure S1. Functional activity of HERV-K RcRE sequences with HIV-1 Revs. The functional activity of seven HERV-K RcREs was determined by transfecting the GagPol reporter constructs containing each identified RcREs as well as the control prRcRE into 293T/17 cells together with either 50 ng of prRev, prRec or one of three different HIV-1 Revs (1A, 6AG and 8G). After 72 h, cell supernatants were harvested and supernatant p24 was measured by ELISA. (A) Vectors expressing Rev from HIV 1A, 6AG and 8G, prRev or Rec were transfected together with reporter plasmids that contained the prRcRE or the RcREs from the seven indicated gene regions. Supernatant p24 was measured at 72 h post transfection. (B) For each of the Rev (or Rec) sequences, the activity of the Rev (or Rec)/prRcRE pair from part A was normalized to 1, and the activity of that specific Rev with each of the other RcREs was plotted relative to this value. This allows a direct comparison of the activity of each Rev (or Rec) protein with each of the different RcREs relative to its activity on the prRcRE.

Additional file 2: Figure S2. Quantitative analysis of HERV-K proviral transcripts from total and cytoplasmic RNAseq data. After normalization of the data, the fold difference in the number of unique reads mapping

to the 22q11.23 (left panel) or 4p16.1b (right panel) loci were quantified using DESeq2 for total or cytoplasmic RNA from the Rev, Tat, Tat and Rev or Rec transduced samples, compared to the samples transduced with the empty vector.

Additional file 3: Figure S3. Visualization of NEAT1 reads from total and cytoplasmic RNAseq data. Total and cytoplasmic DESeq2 normalized read counts for NEAT1 were visualized with IGV. Note that DNA reads from total RNA map across the entire NEAT1 gene region and include both the NEAT 1_1 and NEAT 1_2 RNA isoforms. In contrast, most of the reads from cytoplasmic RNA map only to the region corresponding to the NEAT1_1 RNA isoform.

Abbreviations

HERV: human endogenous retrovirus; HML-2: human MMTV-like; LTR: long terminal repeat; ORF: open reading frame; prRcRE: prototype RcRE; prRec: prototype Rec; EV: empty vector; IRES: internal ribosome entry site; SEAP: secreted placental alkaline phosphatase; GTF: gene transfer format.

Acknowledgements

We thank Jing Huang for expert technical expertise, David Grabski and Sarah French for helpful discussions and Dr. Dario Vignali for supplying the pMSCV-IRES-fluorescent protein vectors through Addgene. Technical assistance was provided by the University of Virginia Flow Cytometry Core Facility.

Authors' contributions

LRG wrote the first draft of the manuscript, prepared all figures and performed most of the experiments. REJ performed the functional experiments relating to HERV-K 3q12.3. PEHJ created vectors expressing the different HIV-1 Rev subtypes. SB provided bioinformatics expertise. M-LH and DR conceived and contributed to the study design, manuscript revisions and project oversight. All authors read and approved the final manuscript.

Funding

This work was supported by Grants CA206275 and AI134208 from the National Institutes of Health (NIH) to M-L.H and D.R. and the Myles H. Thaler Center for AIDS and Human Retrovirus Research at the University of Virginia. L.R.G. received fellowship support from the NCI Cancer Center Support Grant P30 CA44579 and Farrow Fellowship Endowed Fund at the University of Virginia. Salary support for M-L.H. and D.R. was provided by the Charles H. Ross, Jr., and Myles H. Thaler Endowments at the University of Virginia. P.E.H.J. was supported by Grant K08AI136671 from the National Institutes of Health.

Availability of data and materials

The datasets used and/or analyzed during the current study are available from the corresponding author on reasonable request.

Ethics approval and consent to participate

Not applicable.

Consent for publication

Not applicable.

Competing interests

The authors declare that they have no competing interests.

Author details

¹ Myles H. Thaler Center for AIDS and Human Retrovirus Research and the Department of Microbiology, Immunology, Cancer Biology, University of Virginia, Charlottesville 22908, USA. ² Division of Infectious Diseases and International Health, University of Virginia, Charlottesville 22908, USA. ³ Biochemistry and Molecular Genetics, University of Virginia, Charlottesville 22908, USA.

Received: 26 October 2019 Accepted: 7 December 2019
Published online: 16 December 2019

References

- Vargiu L, Rodriguez-Tome P, Sperber GO, Cadeddu M, Grandi N, Blikstad V, et al. Classification and characterization of human endogenous retroviruses; mosaic forms are common. *Retrovirology*. 2016;13:7.
- Shin W, Lee J, Son SY, Ahn K, Kim HS, Han K. Human-specific HERV-K insertion causes genomic variations in the human genome. *PLoS ONE*. 2013;8(4):e60605.
- Benachenhou F, Blikstad V, Blomberg J. The phylogeny of orthoretroviral long terminal repeats (LTRs). *Gene*. 2009;448(2):134–8.
- Copeland NG, Hutchison KW, Jenkins NA. Excision of the DBA ecotropic provirus in dilute coat-color revertants of mice occurs by homologous recombination involving the viral LTRs. *Cell*. 1983;33(2):379–87.
- Stoye JP. Studies of endogenous retroviruses reveal a continuing evolutionary saga. *Nat Rev Microbiol*. 2012;10(6):395–406.
- Jern P, Coffin JM. Effects of retroviruses on host genome function. *Annu Rev Genet*. 2008;42:709–32.
- Leib-Mösch CSW, Schön U. Influence of human endogenous retroviruses on cellular gene expression. *Retroviruses and primate genome evolution*. Georgetown: Landes Bioscience; 2005.
- Medstrand P, Landry JR, Mager DL. Long terminal repeats are used as alternative promoters for the endothelin B receptor and apolipoprotein C-I genes in humans. *J Biol Chem*. 2001;276(3):1896–903.
- Barbulescu M, Turner G, Seaman MI, Deinard AS, Kidd KK, Lenz J. Many human endogenous retrovirus K (HERV-K) proviruses are unique to humans. *Curr Biol*. 1999;9(16):861–8.
- Turner G, Barbulescu M, Su M, Jensen-Seaman MI, Kidd KK, Lenz J. Insertional polymorphisms of full-length endogenous retroviruses in humans. *Curr Biol*. 2001;11(19):1531–5.
- Hohn O, Hanke K, Bannert N. HERV-K(HML-2), the best preserved family of HERVs: endogenization, expression, and implications in health and disease. *Front Oncol*. 2013;3:246.
- Denne M, Sauter M, Armbruster V, Licht JD, Roemer K, Mueller-Lantzsch N. Physical and functional interactions of human endogenous retrovirus proteins Np9 and rec with the promyelocytic leukemia zinc finger protein. *J Virol*. 2007;81(11):5607–16.
- Chen T, Meng Z, Gan Y, Wang X, Xu F, Gu Y, et al. The viral oncogene Np9 acts as a critical molecular switch for co-activating beta-catenin, ERK, Akt and Notch1 and promoting the growth of human leukemia stem/progenitor cells. *Leukemia*. 2013;27(7):1469–78.
- Subramanian RP, Wildschutte JH, Russo C, Coffin JM. Identification, characterization, and comparative genomic distribution of the HERV-K (HML-2) group of human endogenous retroviruses. *Retrovirology*. 2011;8:90.
- Dewannieux M, Harper F, Richaud A, Letzelter C, Ribet D, Pierron G, et al. Identification of an infectious progenitor for the multiple-copy HERV-K human endogenous retroelements. *Genome Res*. 2006;16(12):1548–56.
- Lee YN, Bieniasz PD. Reconstitution of an infectious human endogenous retrovirus. *PLoS Pathog*. 2007;3(11):e10.
- Wildschutte JH, Williams ZH, Montesin M, Subramanian RP, Kidd JM, Coffin JM. Discovery of unfixed endogenous retrovirus insertions in diverse human populations. *Proc Natl Acad Sci USA*. 2016;113(16):E2326–34.
- Li W, Lin L, Malhotra R, Yang L, Acharya R, Poss M. A computational framework to assess genome-wide distribution of polymorphic human endogenous retrovirus-K in human populations. *PLoS Comput Biol*. 2019;15(3):e1006564.
- Buzdin A, Kovalskaya-Alexandrova E, Gogvadze E, Sverdlov E. At least 50% of human-specific HERV-K (HML-2) long terminal repeats serve in vivo as active promoters for host nonrepetitive DNA transcription. *J Virol*. 2006;80(21):10752–62.
- Fuentes DR, Swigut T, Wsocka J. Systematic perturbation of retroviral LTRs reveals widespread long-range effects on human gene regulation. *Elife*. 2018;7:e35989.
- Fornerod M, Ohno M, Yoshida M, Mattaj JW. CRM1 is an export receptor for leucine-rich nuclear export signals. *Cell*. 1997;90(6):1051–60.
- Magin C, Lower R, Lower J. cORF and RcRE, the Rev/Rex and RRE/RxRE homologues of the human endogenous retrovirus family HTDV/HERV-K. *J Virol*. 1999;73(11):9496–507.
- Yang J, Bogerd HP, Peng S, Wiegand H, Truant R, Cullen BR. An ancient family of human endogenous retroviruses encodes a functional homolog of the HIV-1 Rev protein. *Proc Natl Acad Sci USA*. 1999;96(23):13404–8.
- Rekosh D, Hammarskjöld ML. Intron retention in viruses and cellular genes: detention, border controls and passports. *Wiley Interdiscip Rev RNA*. 2018;9(3):e1470.
- Hadzopoulou-Cladaras M, Felber BK, Cladaras C, Athanassopoulos A, Tse A, Pavlakis GN. The rev (trs/art) protein of human immunodeficiency virus type 1 affects viral mRNA and protein expression via a cis-acting sequence in the env region. *J Virol*. 1989;63(3):1265–74.
- Hammarskjöld ML, Heimer J, Hammarskjöld B, Sangwan I, Albert L, Rekosh D. Regulation of human immunodeficiency virus env expression by the rev gene product. *J Virol*. 1989;63(5):1959–66.
- Hidaka M, Inoue J, Yoshida M, Seiki M. Post-transcriptional regulator (rex) of HTLV-1 initiates expression of viral structural proteins but suppresses expression of regulatory proteins. *EMBO J*. 1988;7(2):519–23.
- Seiki M, Inoue J, Hidaka M, Yoshida M. Two cis-acting elements responsible for posttranscriptional trans-regulation of gene expression of human T-cell leukemia virus type I. *Proc Natl Acad Sci USA*. 1988;85(19):7124–8.
- Nitta T, Hofacre A, Hull S, Fan H. Identification and mutational analysis of a Rev response element in Jaagsiekte sheep retrovirus RNA. *J Virol*. 2009;83(23):12499–511.
- Mertz JA, Simper MS, Lozano MM, Payne SM, Dudley JP. Mouse mammary tumor virus encodes a self-regulatory RNA export protein and is a complex retrovirus. *J Virol*. 2005;79(23):14737–47.
- Magin-Lachmann C, Hahn S, Strobel H, Held U, Lower J, Lower R. Rec (formerly Corf) function requires interaction with a complex, folded RNA structure within its responsive element rather than binding to a discrete specific binding site. *J Virol*. 2001;75(21):10359–71.
- Sherrill-Mix S, Ocwieja KE, Bushman FD. Gene activity in primary T cells infected with HIV89.6: intron retention and induction of genomic repeats. *Retrovirology*. 2015;12:79.
- Conteras-Galindo R, Almodovar-Camacho S, Gonzalez-Ramirez S, Lorenzo E, Yamamura Y. Comparative longitudinal studies of HERV-K and HIV-1 RNA titers in HIV-1-infected patients receiving successful versus unsuccessful highly active antiretroviral therapy. *AIDS Res Hum Retroviruses*. 2007;23(9):1083–6.
- Conteras-Galindo R, Kaplan MH, Markovitz DM, Lorenzo E, Yamamura Y. Detection of HERV-K(HML-2) viral RNA in plasma of HIV type 1-infected individuals. *AIDS Res Hum Retroviruses*. 2006;22(10):979–84.
- Conteras-Galindo R, Kaplan MH, Conteras-Galindo AC, Gonzalez-Hernandez MJ, Ferlenghi I, Giusti F, et al. Characterization of human endogenous retroviral elements in the blood of HIV-1-infected individuals. *J Virol*. 2012;86(1):262–76.
- Bhardwaj N, Maldarelli F, Mellors J, Coffin JM. HIV-1 infection leads to increased transcription of human endogenous retrovirus HERV-K (HML-2) proviruses in vivo but not to increased virion production. *J Virol*. 2014;88(19):11108–20.
- Gonzalez-Hernandez MJ, Swanson MD, Conteras-Galindo R, Cookinham S, King SR, Noel RJ Jr, et al. Expression of human endogenous retrovirus type K (HML-2) is activated by the Tat protein of HIV-1. *J Virol*. 2012;86(15):7790–805.
- Gonzalez-Hernandez MJ, Cavalcoli JD, Sartor MA, Conteras-Galindo R, Meng F, Dai M, et al. Regulation of the human endogenous retrovirus K (HML-2) transcriptome by the HIV-1 Tat protein. *J Virol*. 2014;88(16):8924–35.
- Jackson PE, Tebit DM, Rekosh D, Hammarskjöld ML. Rev-RRE functional activity differs substantially among primary HIV-1 isolates. *AIDS Res Hum Retroviruses*. 2016;32(9):923–34.
- Guzik BW, Levesque L, Prasad S, Bor YC, Black BE, Paschal BM, et al. NXT1 (p15) is a crucial cellular cofactor in TAP-dependent export of intron-containing RNA in mammalian cells. *Mol Cell Biol*. 2001;21(7):2545–54.
- Shuck-Lee D, Chen FF, Willard R, Raman S, Ptak R, Hammarskjöld ML, et al. Heterocyclic compounds that inhibit Rev-RRE function and human immunodeficiency virus type 1 replication. *Antimicrob Agents Chemother*. 2008;52(9):3169–79.
- Shuck-Lee D, Chang H, Sloan EA, Hammarskjöld ML, Rekosh D. Single-nucleotide changes in the HIV Rev-response element mediate resistance to compounds that inhibit Rev function. *J Virol*. 2011;85(8):3940–9.
- Sloan EA, Kearney MF, Gray LR, Anastos K, Daar ES, Margolick J, et al. Limited nucleotide changes in the Rev response element (RRE) during HIV-1 infection alter overall Rev-RRE activity and Rev multimerization. *J Virol*. 2013;87(20):11173–86.

44. Zerbino DR, Achuthan P, Akanni W, Amode MR, Barrell D, Bhai J, et al. Ensembl 2018. *Nucleic Acids Res.* 2018;46(D1):D754–61.
45. Grow EJ, Flynn RA, Chavez SL, Bayless NL, Wossidlo M, Wesche DJ, et al. Intrinsic retroviral reactivation in human preimplantation embryos and pluripotent cells. *Nature.* 2015;522(7555):221–5.
46. Li R, Harvey AR, Hodgetts SJ, Fox AH. Functional dissection of NEAT1 using genome editing reveals substantial localization of the NEAT1_1 isoform outside paraspeckles. *RNA.* 2017;23(6):872–81.
47. Contreras-Galindo R, Lopez P, Velez R, Yamamura Y. HIV-1 infection increases the expression of human endogenous retroviruses type K (HERV-K) in vitro. *AIDS Res Hum Retroviruses.* 2007;23(1):116–22.
48. de Mulder M, SenGupta D, Deeks SG, Martin JN, Pilcher CD, Hecht FM, et al. Anti-HERV-K (HML-2) capsid antibody responses in HIV elite controllers. *Retrovirology.* 2017;14(1):41.
49. Wood EJ, Chin-Inmanu K, Jia H, Lipovich L. Sense-antisense gene pairs: sequence, transcription, and structure are not conserved between human and mouse. *Front Genet.* 2013;4:183.
50. Cakiroglu SA, Zaugg JB, Luscombe NM. Backmasking in the yeast genome: encoding overlapping information for protein-coding and RNA degradation. *Nucleic Acids Res.* 2016;44(17):8065–72.
51. Brinzevich D, Young GR, Sebra R, Ayllon J, Maio SM, Deikus G, et al. HIV-1 interacts with human endogenous retrovirus K (HML-2) envelopes derived from human primary lymphocytes. *J Virol.* 2014;88(11):6213–23.
52. Young GR, Terry SN, Manganaro L, Cuesta-Dominguez A, Deikus G, Bernal-Rubio D, et al. HIV-1 Infection of Primary CD4(+) T Cells Regulates the Expression of Specific Human Endogenous Retrovirus HERV-K (HML-2) Elements. *J Virol.* 2018;92(1):e01507–17.
53. Montesin M, Bhardwaj N, Williams ZH, Kuperwasser C, Coffin JM. Mechanisms of HERV-K (HML-2) transcription during human mammary epithelial cell transformation. *J Virol.* 2018;92(1):e01258–317.
54. Montesin M, Williams ZH, Subramanian RP, Kuperwasser C, Coffin JM. Promoter expression of HERV-K (HML-2) provirus-derived sequences is related to LTR sequence variation and polymorphic transcription factor binding sites. *Retrovirology.* 2018;15(1):57.
55. Jones RB, Garrison KE, Mujib S, Mihajlovic V, Aidarus N, Hunter DV, et al. HERV-K-specific T cells eliminate diverse HIV-1/2 and SIV primary isolates. *J Clin Invest.* 2012;122(12):4473–89.
56. van der Kuyl AC. HIV infection and HERV expression: a review. *Retrovirology.* 2012;9:6.
57. Mayer J, Harz C, Sanchez L, Pereira GC, Maldener E, Heras SR, et al. Transcriptional profiling of HERV-K(HML-2) in amyotrophic lateral sclerosis and potential implications for expression of HML-2 proteins. *Mol Neurodegener.* 2018;13(1):39.
58. Alfahad T, Nath A. Retroviruses and amyotrophic lateral sclerosis. *Antiviral Res.* 2013;99(2):180–7.
59. Bowen LN, Tyagi R, Li W, Alfahad T, Smith B, Wright M, et al. HIV-associated motor neuron disease: HERV-K activation and response to antiretroviral therapy. *Neurology.* 2016;87(17):1756–62.
60. Langner JS, Fuchs NV, Hoffmann J, Wittmann A, Brutschy B, Lower R, et al. Biochemical analysis of the complex between the tetrameric export adapter protein Rec of HERV-K/HML-2 and the responsive RNA element RcRE pck30. *J Virol.* 2012;86(17):9079–87.
61. Bogerd HP, Tiley LS, Cullen BR. Specific binding of the human T-cell leukemia virus type I Rex protein to a short RNA sequence located within the Rex-response element. *J Virol.* 1992;66(12):7572.
62. Bannert N, Kurth R. Retroelements and the human genome: new perspectives on an old relation. *Proc Natl Acad Sci USA.* 2004;101(Suppl 2):14572–9.
63. Bor YC, Swartz J, Morrison A, Rekosh D, Ladomery M, Hammarskjold ML. The Wilms' tumor 1 (WT1) gene (+KTS isoform) functions with a CTE to enhance translation from an unspliced RNA with a retained intron. *Genes Dev.* 2006;20(12):1597–608.
64. Lewis N, Williams J, Rekosh D, Hammarskjold ML. Identification of a cis-acting element in human immunodeficiency virus type 2 (HIV-2) that is responsive to the HIV-1 rev and human T-cell leukemia virus types I and II rex proteins. *J Virol.* 1990;64(4):1690–7.
65. Wehrly K, Chesebro B. p24 antigen capture assay for quantification of human immunodeficiency virus using readily available inexpensive reagents. *Methods.* 1997;12(4):288–93.
66. Graham FL, van der Eb AJ. A new technique for the assay of infectivity of human adenovirus 5 DNA. *Virology.* 1973;52(2):456–67.
67. Naldini L, Blomer U, Galloway P, Ory D, Mulligan R, Gage FH, et al. In vivo gene delivery and stable transduction of nondividing cells by a lentiviral vector. *Science.* 1996;272(5259):263–7.
68. Soneoka Y, Cannon PM, Ramsdale EE, Griffiths JC, Romano G, Kingsman SM, et al. A transient three-plasmid expression system for the production of high titer retroviral vectors. *Nucleic Acids Res.* 1995;23(4):628–33.
69. Hammarskjold ML, Li H, Rekosh D, Prasad S. Human immunodeficiency virus env expression becomes Rev-independent if the env region is not defined as an intron. *J Virol.* 1994;68(2):951–8.
70. Kim D, Langmead B, Salzberg SL. HISAT: a fast spliced aligner with low memory requirements. *Nat Methods.* 2015;12(4):357–60.
71. Liao Y, Smyth GK, Shi W. featureCounts: an efficient general purpose program for assigning sequence reads to genomic features. *Bioinformatics.* 2014;30(7):923–30.
72. Liao Y, Smyth GK, Shi W. The R package Rsubread is easier, faster, cheaper and better for alignment and quantification of RNA sequencing reads. *Nucleic Acids Res.* 2019;47(8):e47.
73. Love MI, Huber W, Anders S. Moderated estimation of fold change and dispersion for RNA-seq data with DESeq2. *Genome Biol.* 2014;15(12):550.
74. Ramirez F, Dunder F, Diehl S, Gruning BA, Manke T. deepTools: a flexible platform for exploring deep-sequencing data. *Nucleic Acids Res.* 2014;42(Web Server issue):W187–91.
75. Thorvaldsdottir H, Robinson JT, Mesirov JP. Integrative genomics viewer (IGV): high-performance genomics data visualization and exploration. *Brief Bioinform.* 2013;14(2):178–92.
76. Robinson JT, Thorvaldsdottir H, Wenger AM, Zehir A, Mesirov JP. Variant review with the integrative genomics viewer. *Cancer Res.* 2017;77(21):e31–4.

Publisher's Note

Springer Nature remains neutral with regard to jurisdictional claims in published maps and institutional affiliations.

Ready to submit your research? Choose BMC and benefit from:

- fast, convenient online submission
- thorough peer review by experienced researchers in your field
- rapid publication on acceptance
- support for research data, including large and complex data types
- gold Open Access which fosters wider collaboration and increased citations
- maximum visibility for your research: over 100M website views per year

At BMC, research is always in progress.

Learn more biomedcentral.com/submissions

